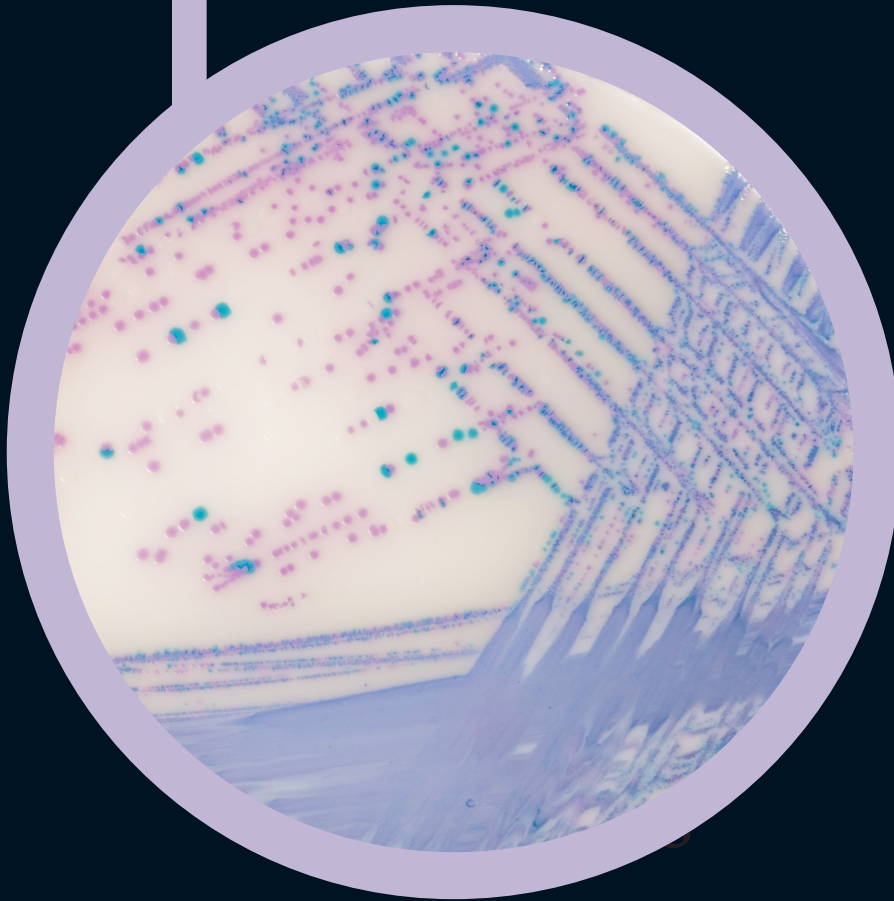


# ● Colorex™ Salmonella Plus



For detection and isolation of *Salmonella*  
species including lactose positive *Salmonella*

## Colorex™

Ready to use plates made with the original CHROMagar™ powder base

## For detection and isolation of *Salmonella* species including lactose positive *Salmonella* in food samples

### Background

Mainly due to contamination in the food chain and/or during food-production processes, *Salmonella* commonly induces enteric illness whose major symptoms are abdominal cramps, diarrhea, nausea, vomiting.

### Medium Performance

1 **MEETS ISO 6579-1 REQUIREMENTS**  
by detecting lactose positive *Salmonella* in intense mauve colour.

2 **EASY TO READ BY NAKED EYE**  
Another feature of this medium resides in its nice colour contrast due to the fact that *E. coli* are colourless. *E. coli*, which are usually present in abundance in samples tested for *Salmonella* and could potentially hide suspect colonies, are no longer a concern.

3 **HIGH SENSITIVITY AND SPECIFICITY**

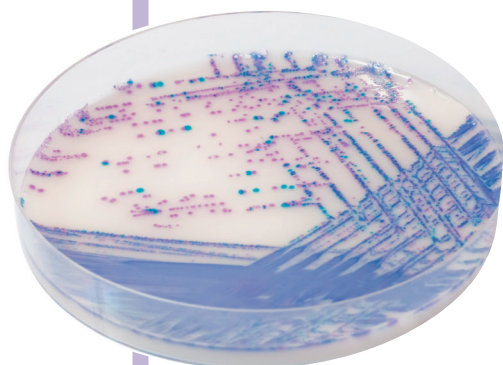
*Salmonella* including lactose positive *Salmonella* **99 %\***

\*Specificity and sensitivity from scientific study: "Evaluation of a new chromogenic medium CHROMagar™ Salmonella Plus for the detection of *Salmonella* species including lactose positive *Salmonella*, *S.Typhi* and *S.Paratyphi*" de Beaumont C., Breuil J., Dedicova D., Tran Q. 2006. Poster presented during ECCMID meeting.

**Did you know?** RambaQUICK™ Salmonella broth enrichment can be used ahead of the inoculation step of Colorex™ Salmonella Plus culture plate, following the RambaQUICK™ Salmonella Method to rapidly detect *Salmonella*. Product code for this broth enrichment is SQ001.

### Medium Description

<b>Powder Base</b>	Total ..... 32.8 g/L Agar ..... 15.0 Peptone and Yeast extract ..... 8.0 Salts ..... 8.5 Chromogenic mix ..... 1.3 Storage at 15/30 °C - pH: 7.5 ± 0.2 Shelf Life ..... 3 years
<b>+</b> <b>Supplement</b> (included in the pack)	1 <sup>st</sup> : Liquid form ..... 6 mL/L Storage at 15/30 °C      Shelf Life ..... 5 years
<b>Colorex™ White Opaque supplement</b>	<u>In order to obtain a white opaque background:</u> Powder form : ..... 1.0 g/L Storage at 15/30 °C      Shelf Life ..... 3 years
<b>Usual Samples</b>	food, meat, fresh eggs, milk products etc.
<b>Procedure</b>	Inoculation after selective broth enrichment of samples according to ISO 6579. Incubation 18-24 h at 37 °C. Aerobic conditions.



Opaque plate: with Colorex™ White Opaque Supplement

### Plate Reading

- *Salmonella* including *S. typhi*, *S. paratyphi* A and lactose positive *Salmonella*  
→ mauve
- Coliforms  
→ blue
- *E. coli*  
→ colourless
- *Proteus*  
→ colourless or inhibited

